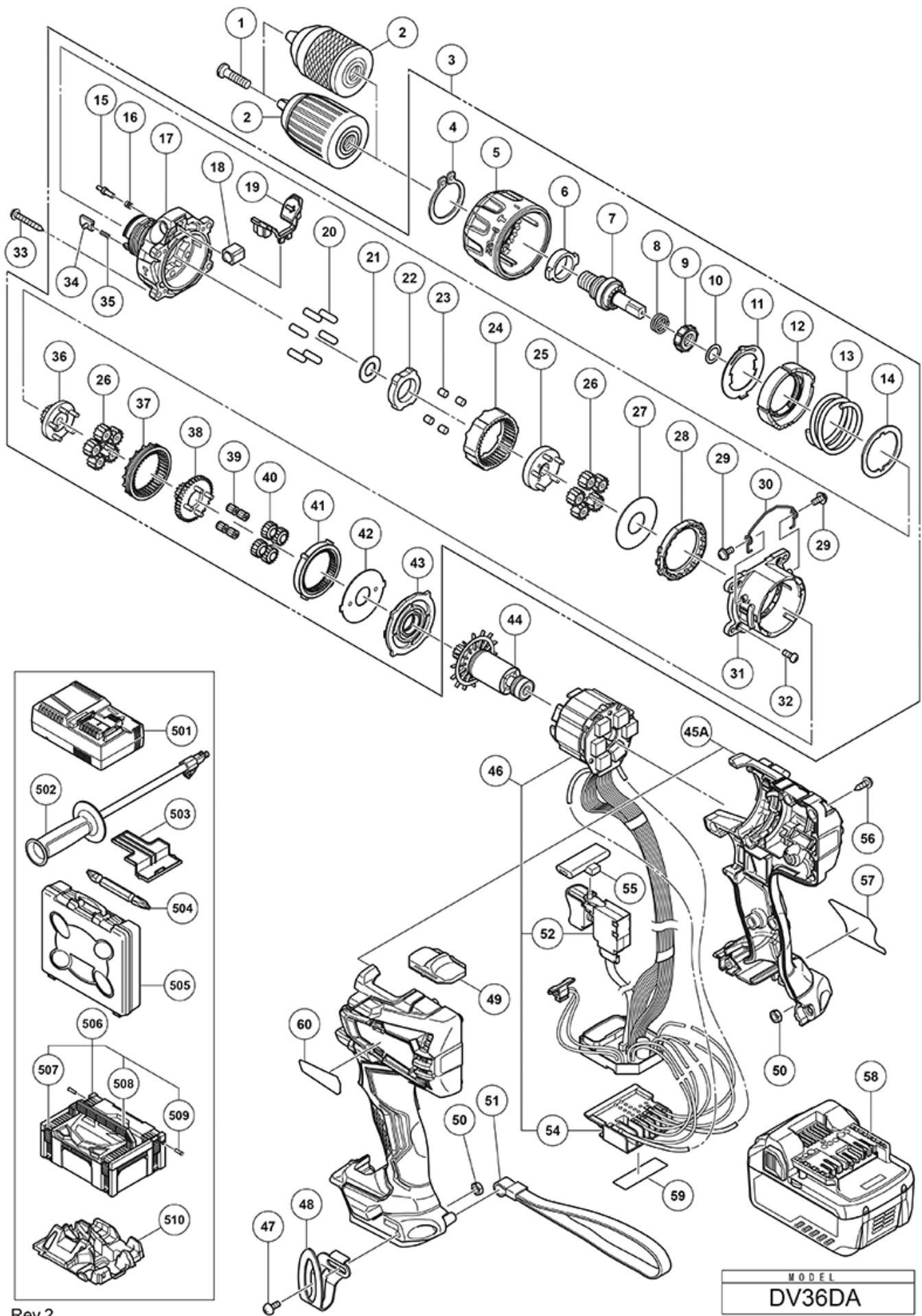


nÂ°	Artikel	Aantal gebruikt
*601	310331 DEPTH GAUGE	1
*601	303709 DEPTH GAUGE	1
*58	372121M BATTERY BSL 36B18 (USA.CAN)	2
*58	371750 BATTERY BSL 36A18 (EUROPE.AUS.NZL)	2
*2	339721 DRILL CHUCK 13VLRX-N (NEW 339723)	1
*2	339724 DRILL CHUCK 13VLRX-N (W/O CHUCK WRENCH)	1
*2	339723 DRILL CHUCK 13VLRX-N (NEW 752065 )	1
1	370909 SEAL LOCK FLAT HD. SCREW M6X25 (LEFT HAND) NEW	1
3	372221 GEAR BOX ASS'Y	1
4	339736 RETAINING RING FOR D30 SHAFT NEW	1
5	339739 CLUTCH DIAL NEW	1
6	339741 METAL NEW	1
7	339742 SPINDLE NEW	1
8	327136 SPRING (C)	1
9	339772 RATCHET (B) NEW	1
10	327147 WASHER (A)	1
11	339744 CLICK SPRING NEW	1
12	339745 NUT NEW	1
13	339746 SPRING NEW	1
14	339747 THRUST PLATE NEW	1
15	339748 STOPPER NEW	2
16	331886 STOPPER SPRING	2
17	372223 FRONT CASE NEW	1
18	371796 SLEEVE NUT M8 NEW	1
19	371795 SLEEVE CAP NEW	1
20	333539 PIN SET (6 PCS.)	6
21	328717 WASHER (B)	1
22	339752 LOCK RING NEW	1
23	319744 ROLLER	4
24	339753 RING GEAR NEW	1
25	339754 CARRIER NEW	1
26	339774 PLANET GEAR (B) SET NEW	10
27	331892 WASHER (A)	1
28	372226 SHIFT DOG NEW	1
29	331895 SCREW SET D2 (2 PCS)	2
30	339755 SHIFT ARM NEW	1
31	372225 REAR CASE	1
32	320087 SCREW SET M3X12 (4 PCS.)	4

nÂ°	Artikel	Aantal gebruikt
33	305490 TAPPING SCREW D4X30 (W/FLANGE) BLACK	4
34	339773 SLIP BLOCK NEW	2
35	327133 STOPPER SPRING	2
36	339757 PINION (C) NEW	1
37	339758 SLIDE RING GEAR NEW	1
38	339759 PINION (B) NEW	1
39	331926 NEEDLE BEARING SET (4 PCS.)	4
40	334441 PLANET GEAR (A) SET (4 PCS)	4
41	339760 FIRST RING GEAR NEW	1
42	339761 WASHER (B) NEW	1
43	339762 MOTOR SPACER NEW	1
44	361070 ROTOR PINION SET NEW	1
45A	373160 HOUSING (A).(B) SET	1
46	373161 WIRING ASS'Y	1
47	327001 TRUSS HD. SCREW M4 (BLACK)	1
48	372229 HOOK NEW	1
49	334267 SHIFT KNOB (OLD 333527)	1
50	327002 LOCK NUT M4 (BLACK)	2
51	306952 STRAP (BLACK)	1
52	370151 DC-SPEED CONTROL SWITCH	1
54	372228 BATTERY TERMINAL NEW	1
55	339768 PUSHING BUTTON	1
56	313687 TAPPING SCREW (W/FLANGE) D3X16 (BLACK)	10
57	NAME PLATE	1
59	373221 CAUTION PLATE	1
60	BRAND LABEL	1
501	CHARGER (MODEL UC 18YSL3)	1
502	371797 SIDE HANDLE DS/DV/18DBL2/DBXL SINCE 10.2016 (OLD 339770)	1
503	329897 BATTERY COVER	1
504	983006 + DRIVER BIT NO.2 65L	1
505	339778 CASE	1
506	336471 CASE ASS'Y (STACKABLE)	1
507	336472 LATCH	4
508	336473 HANDLE (HSC) NEW	1
509	336474 HINGE	2
510	339776 INNER TRAY DS14/18DBL2 DV14/18DBL2 HSC NEW AUG	1
602	370651 SCREW SET M4	1



Rev.2