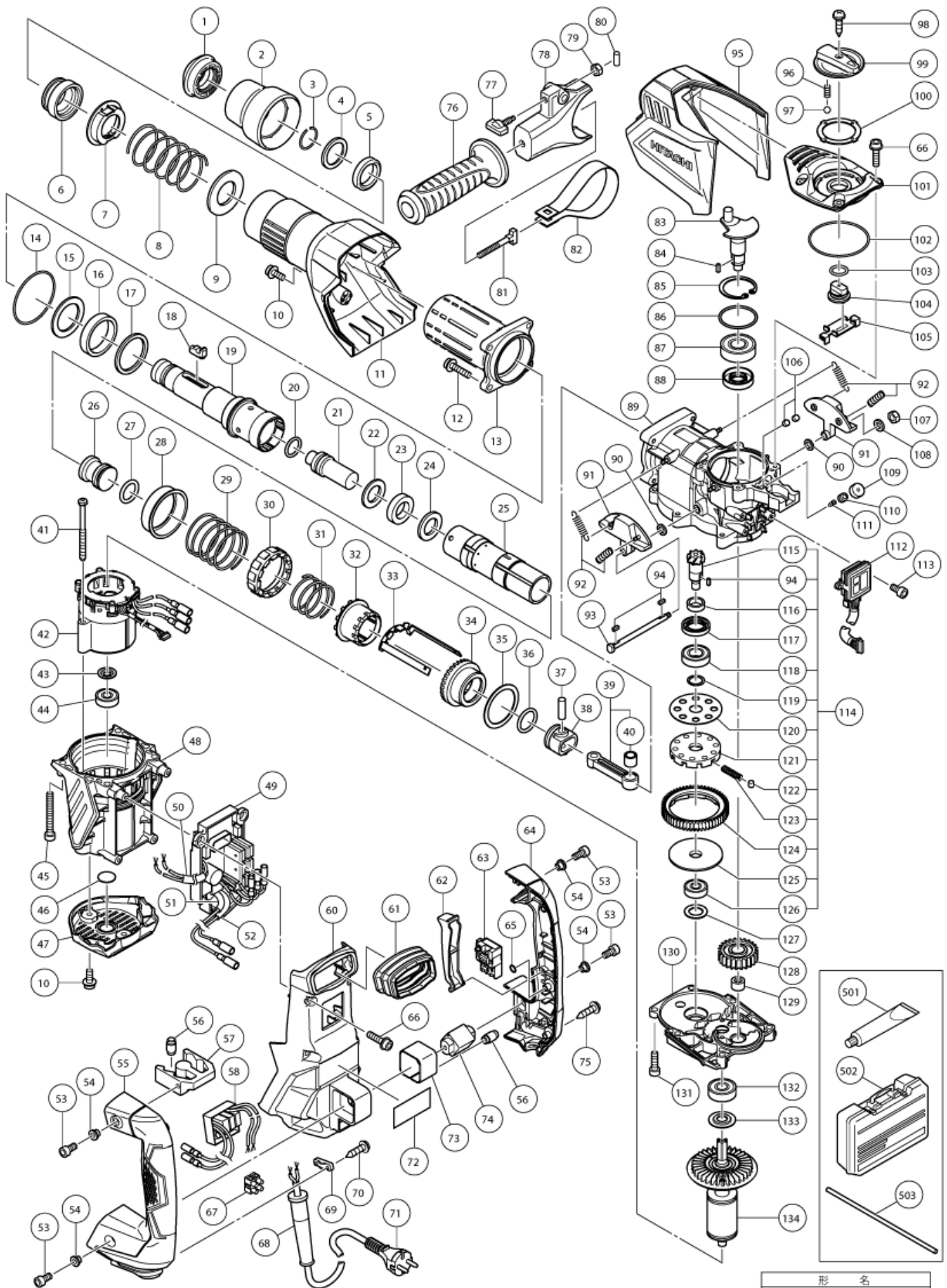


nÂ°	Artikel	Aantal gebruikt
1	337562	1
2	337560	1
3	318590 STOPPER RING	1
4	337561 RETAINER WASHER	1
5	337559 RETAINER DAMPER (A)	1
6	337558 BIT LOCK HOLDER	1
8	337556 RETAINER SPRING	1
9	337557	1
10	998471 HEX.SOCKET HD.BOLT M5X12	3
11	337553 CYLINDER CASE COVER	1
12	991712 HEX.SOCKET HD.BOLT (W/FLANGE)	4
13	337552	1
14	956996 O-RING (1AS-60)	1
15	337549	1
16	337548	1
17	337547	1
19	337536	1
20	313396 O-RING (C)	1
21	337537	1
22	337538 DAMPER WASHER NEW OCT	1
23	321835 DAMPER	1
24	337539 DAMPER HOLDER NEW	1
25	337540	1
26	337541 STRIKER NEW	1
28	337550 SPRING HOLDER (B) NEW	1
29	337551 LOCK SPRING NEW	1
30	331535 LOCK SLEEVE	1
31	337542 CLUTCH SPRING NEW	1
32	337543 CLUTCH NEW	1
33	337544	1
34	337545 BEVEL GEAR NEW	1
35	337546 THRUST WASHER NEW	1
36	986104 O-RING	1
37	980708 PISTON PIN	1
38	326369 PISTON	1
39	337535 CONNECTING ROD ASS'Y	1
40	335303 NEEDLE BEARING	1
41	953174 HD.TAPPING SCREW D5X55 (OLD 956669)	2

nÂ°	Artikel	Aantal gebruikt
42	340885E STATOR SENSOR PCB SET 220-240 VOLT NEW MAY	1
43	958915 WASHER (A)	1
45	986940 SEAL LOCK HEX. SOCKET HD. BOLT M6X45	4
46	333263 DUST SEAL	1
49	337580 CONTROLLER SET 220-240 VOLT NEW MAY	1
51	322530 VINYL TUBE L55	1
52	321322 VINYL TUBE	1
53	991690 SEAL LOCK HEX. SOCKET HD. BOLT M5X12	4
54	991711 DISTANCE PIECE (B)	4
55	337590 HANDLE (B) NEW	1
56	310124 HANDLE DAMPER	8
57	310123 TRANSATORY UNIT	1
58	337586 FILTER PCB SET 220-240 VOLT NEW MAY	1
61	337591 BELLOWS NEW	1
62	337588 TRIGGER NEW	1
63	337587 SWITCH NEW JUN	1
64	337589 HANDLE (A) NEW	1
65	320218 O-RING	1
66	994192 HEX.SOCKET HD.BOLT	1
67	958308Z PILLAR TERMINAL (A)	1
68	958049 CORD ARMOR D8.2 (OLD 958049Z)	1
68	940778 CORD ARMOR D10.7	1
69	960266 CORD CLIP	1
71	500465Z CORD 4M 2 X 1.0 H07RN-F W/PLUG 16A CEE FORM 2P+E 110 VOLT	1
71	500446Z CORD FOR GBR 230V	1
73	337574 HOLDER NEW	1
74	326377 HANDLE SHAFT	1
75	301653 TAPPING SCREW (W/FLANGE) D4X20 (BLACK)	3
76	330209 SIDE HANDLE	1
77	337577	1
78	337576 MOUNT NEW SEP	1
79	949556 NUT M6 (10 PCS)	1
80	949859 ROLL PIN D2X8 (10 PCS)	1
81	331247 HANDLE BOLT	1
82	337575 BAND NEW SEP	1
83	337531 CRANK SHAFT NEW FEB	1
84	940533 FEATHER KEY 3X3X10	1
85	948391 RETAINING RING FOR D40 HOLE	1

nÂ°	Artikel	Aantal gebruikt
86	996363 O-RING (S-40)	1
87	6203DD BALL BEARING 6203DDUCMAV2S	1
88	321274 OIL SEAL (B)	1
89	337530 CRANK CASE NEW NOV	1
90	337571 WASHER NEW	2
91	337569	2
92	337572 WEIGHT SPRING NEW NOV	4
93	337570 WEIGHT SHAFT NEW	1
94	944109 FEATHER KEY 3X3X8	3
95	337592 CRANK CASE COVER NEW NOV	1
96	337567 LEVER SPRING NEW	1
97	959149 STEEL BALL D4.76 (10 PCS)	1
99	337566 CHANGE LEVER NEW	1
100	337568 GUIDE PLATE NEW	1
101	337564 CRANK COVER NEW	1
102	877315 CYLINDER O-RING BORE SIZE 63.9MM	1
103	338312 O-RING NEW	1
104	337565 LEVER SHAFT	1
105	337563	1
106	338315 FELT (B) NEW	2
107	949555 NUT M5 (10 PCS)	1
108	949424 WASHER M5 (10 PCS)	1
109	338314 FELT (A) NEW	1
110	338313 CAP SCREW NEW	1
111	995396 VALVE	1
112	337581 PANEL NEW JUN	1
113	983162 SEAL LOCK HEX. SOCKET HD. BOLT M4X12	2
114	337533 SLIP CLUTCH ASS'Y NEW FEB	1
115	337534 BEVEL PINION NEW	1
116	321279 COLLAR	1
117	313050 OIL SEAL (A)	1
118	6002DD BALL BEARING 6002DDUCMPS2S	1
119	313058 WASHER	1
120	313053 WASHER (A)	1
121	321281 GEAR HOLDER	1
122	320343 NEEDLE	1
123	321282 SPRING (C)	1
124	331215 SECOND GEAR	1

nÂ°	Artikel	Aantal gebruikt
125	321283 SPACER	1
126	629VVM BALL BEARING 629VVMC2EPS2L	1
127	944525 BEARING WASHER (C)	1
128	337532 FIRST GEAR NEW JAN	1
129	939299 NEEDLE BEARING (M661)	1
130	337583 GEAR COVER NEW JAN	1
131	992803 SEAL LOCK HEX. SOCKET HD. BOLT M6X20 (OLD 986086)	2
132	6201DD BALL BEARING 6201DDUCMAV2S	1
133	302429 DUST WASHER (B)	1
134	337578 ROTOR	1
501	981840 GREASE (FG-6A) (30G)	1
502	337594	1
503	971786 STOPPER ROD	1
601	335782 GREASE FOR ROTARY HAMMER (60G)	1
602	335781 GREASE FOR ROTARY HAMMER (500G)	1
603	320859 SYRINGE (BLOW-OUT BULB TYPE)	1
620	318085 SYRINGE (BELLOWS TYPE)	1



形名
DH40MEY

Rev.1